

Attachment B

**2018 Exploratory Diamond-Core-Hole Drilling Program
Borehole CLI035_0598
Bureau of Topographic and Geologic Survey
Pennsylvania Department of Conservation and Natural Resources
Sproul State Forest
Farrandsville 7.5-Minute Quadrangle, Clinton County, Pennsylvania**

Drill-Hole Site Description and Location Map

Note: This attachment contains a site description and location map for one (1) proposed exploratory core hole to be completed in 2018 in Sproul State Forest, Farrandsville 7.5-minute topographic quadrangle, Grugan Township, Clinton County. To assist prospective Bidders in understanding the probable subsurface geology and drilling conditions to be encountered, descriptions of the likely geologic formations and rock types to be penetrated by the borehole are included. These descriptions (assessments) are a reasonable attempt by the Department to provide objective geologic information about the work site. As such, they should be considered average probable conditions for the drill hole, including estimated footages, and should not be considered guarantees. Unanticipated rock types and/or drilling conditions may occur at the drill-hole site.

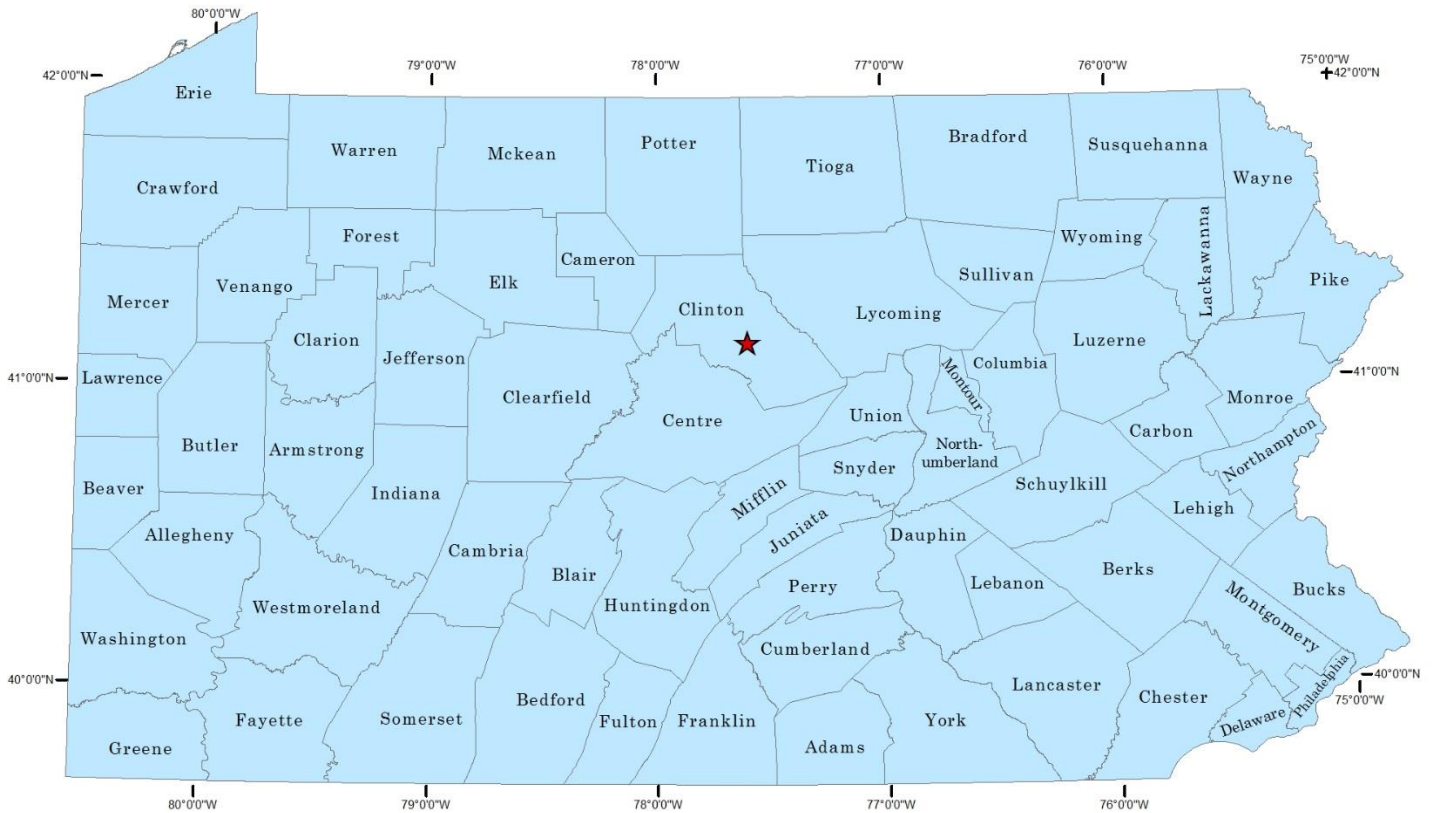


Figure 1: Location of drill site in reference to the state of Pennsylvania

Drilling Site (Borehole CLI035_0598)

LOCATION:

Drilling will occur at one site within Sproul State Forest, Grugan Township, Clinton County.

Location coordinates: X (longitude) = -77.60680°, Y (latitude) = 41.21193°

Directions: From Lock Haven, preceded west on State Route 120 for 8.1 miles. Turn left onto Eagleton Road. Travel 4.3 miles to Teat Run Trail. Turn right onto Teat Run Trail. Proceed 0.5 miles to the drill site. A map of Sproul State Forest with the drill location is located on Figure 3 on the last page of this document.



Figure 2: Panorama view of the proposed drill site.

Anticipated Total Depth: 600 feet.

Water Availability: Water will have to be hauled by truck to the work site, and the recommended source is the West Branch of the Susquehanna River at Baker Run Canoe Access (41.24330/-77.59828). Travel distance is approximately 20 miles from the drill site. Alternate sources may be available.

Geologic Setting: The drill hole will begin in the lower Pennsylvanian, continue through the Mississippian Mauch Chunk Formation, and end in the Burgoon Formation. The rocks are approximately horizontal. No unusual subsurface conditions (e.g., no very hard sandstones, faulting, or natural gas) are anticipated that would require special handling or drilling procedures.

The Pottsville Formation is estimated to be less than 30 feet thick (from a depth of 0 to 30 feet in borehole) and composed dominantly of light gray sandstone, small quartz pebble conglomerate, and claystone. Very minor stringers of coal are possible. All of the quartz-rich rocks cut well.

The Mauch Chunk Formation is estimated to be up to 325 feet thick. The upper 100 feet is anticipated to be interbedded red and green claystone and siltstone, silica cemented sandstone, and minor small quartz pebble conglomerate. The next 200 feet are anticipated to be calcareous sandstone. The lower 25 feet are expected to be red and green claystone and siltstone.

The Burgoon Formation underlies the Mauch Chunk. The remainder of the drill hole will encounter mostly sandstone with minor quartz pebble sandstone and rare gray shale.

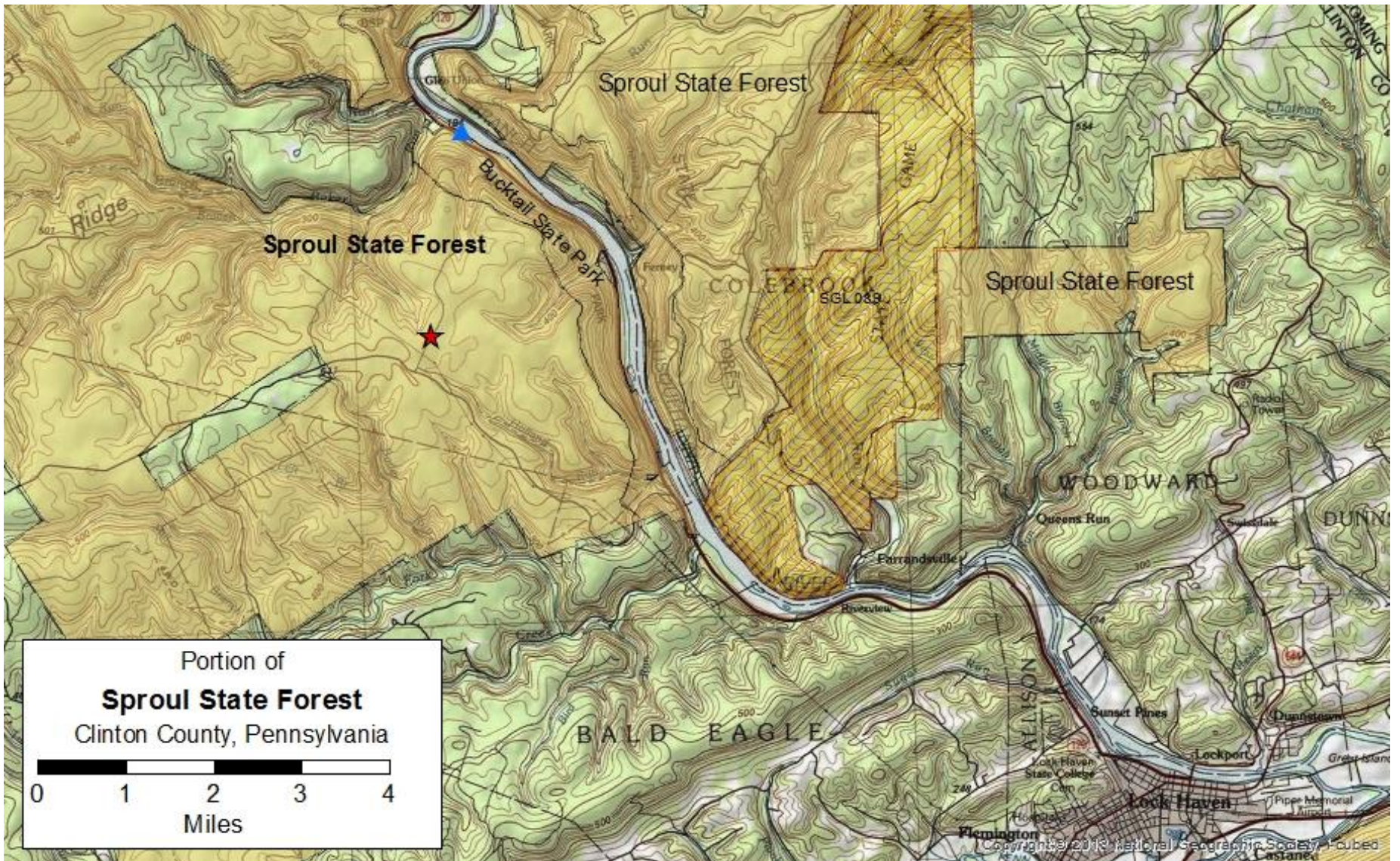


Figure 3: Portion of Sproul State Forest and surrounding area. Drill site location is the red star. Water access is blue triangle.